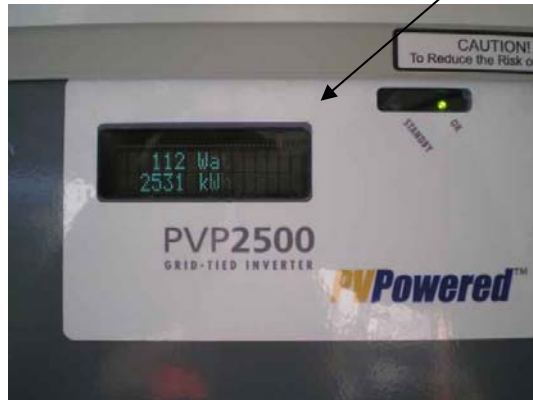


The **UNI-SOLAR** PV cell is especially good at collecting energy at **low light levels**. It has been demonstrated at TISO Labs in Europe that the **UNI-SOLAR** PV cell is as much as 40% more efficient than all competitors when light levels are less than 1/4 suns. This inherent ability to produce energy under low light levels is demonstrated as **UNI-SOLAR** PV arrays activate (turn on) line-tie inverters **earlier in the morning** than any other type of solar array. This results in **more power** into your AC Service Panel every year (per installed watt).



The visible spectrum of light that comes from the sun is familiar to us as the range of colors we see in a rainbow. The **UNI-SOLAR** amorphous silicon solar cell is especially good at collecting the blue part of the visible spectrum. The blue part of the rainbow is dominant in cloudy weather and it is dominant in summer weather. Since the summer is longer than winter in the US, Europe, most of China and all of India, Africa and South America, the **UNI-SOLAR** PV array will be exposed to a

favorable spectrum of light for more days of the year than, for example, crystalline cells that work especially well when the spectrum is skewed toward the red. We see a solar spectrum skewed to the red in Northern States and in Northern Europe during cold, clear days in the winter. Greater amounts of time under a favorable spectrum of light will result in **more power into your AC Service Panel every year (per installed watt)**.

These photos were taken simultaneously at a central Florida 2500 watt Uni-Solar installation!

***JDL ThinFilm***

772-260-5049